

Tile & Turf

PORCELAIN PAVER

CATALOGUE

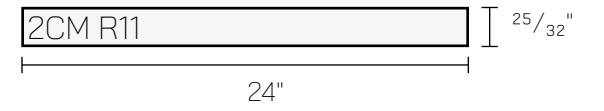




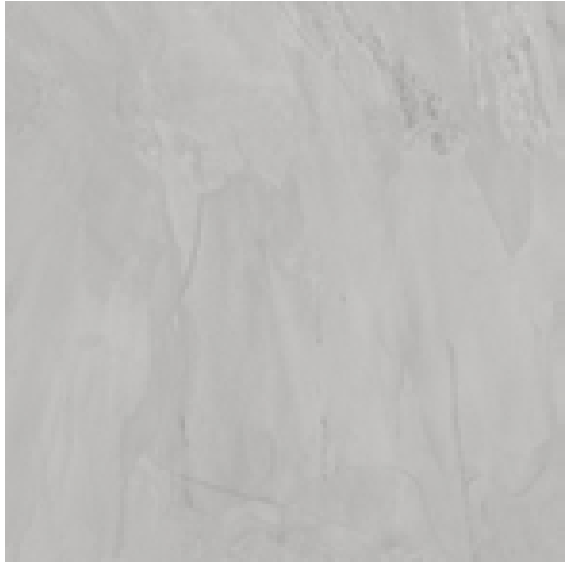
PORCELAIN PAVER



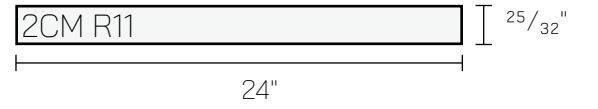
BLUE STONE STEEL



PORCELAIN PAVER



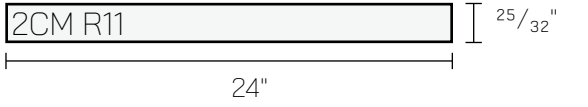
BLUE STONE STEEL SLATE



PORCELAIN PAVER

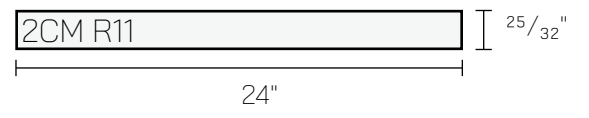


CLAY WHITE



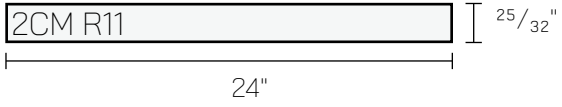


CROSSOVER WHITE



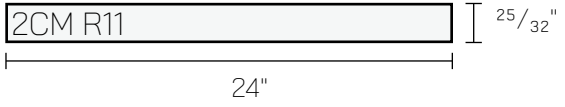


SANDROCK SILVER





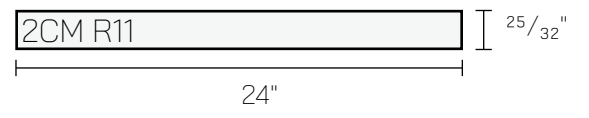
CROSSOVER BEIGE



PORCELAIN PAVER



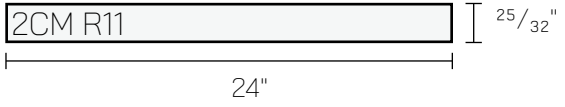
CROSSOVER CREMA



PORCELAIN PAVER



CROSSOVER CREMA

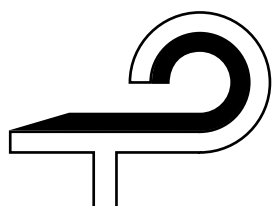


Method	Declared Value
The ASTM C373 Water Absorption	≤ 0.3 %
The ASTM C648 Breaking Strength	≥2000 lbf
The ASTM C650 Chemical Resistance	Resistant
The ASTM C 1026 Freeze-Thaw	Resistant
The ASTM C 1027 Surface Abrasion (PEI)	Min Class 4
The ASTM C 1378 Stain Resistance	Min Class B
ANSI A326.3 Dynamic Coefficient of Friction (DCOF – wet only)	≥0.68
ASTM 1895 Mohs Scratch Hardness	Min 7
Rectified	Yes

Packaging/Box/Pallet Details:

Nominal Thickness		Nominal Size		PCS/BOX	Box		Box per Pallet	Pallet		Pallet Size		Weight of Loaded Pallet	
cm	inch	cm	inch		m ²	sqf		m ²	sqf	cm	inch	kg	lb
2	3/4"	60x60	24x24	2	0.72	7.74	30	21.60	232.41	80x120x75	31x48x29	1,150	2,530
2	3/4"	60x120	24x48	1	0.72	7.74	32	23.04	247.91	93x128x75	36x50x29	1,250	2,750
2	3/4"	30x60	12x24	4	0.72	7.74	32	23.04	247.91	80x120x75	31x48x29	1,220	2,684
2	3/4"	30x30	12x12	4	0.36	3.87	64	23.04	247.91	80x120x75	31x48x29	1,220	2,684
2	3/4"	80x80	32x32	1	0.64	6.88	43	27.52	296.11	80x120x75	31x48x29	1,300	2,860

* Request Quote if the Freight Service is required, by LTL needed.
For more details and delivery for different locations please contact to Sales Representative.



Tile & Turf