

Tile & Turf

ADJUSTABLE PEDESTALS

CATALOGUE





Tile & Turf Systems

These are raised and plastic flooring pedestals used in terraces that may or may not be walked on. They are designed to reach the desired final elevation and eliminate the difference in slope. Their purpose is to enable making the last layer of flooring without using protective alum on the insulation.

These pedestals also aim to provide a continuous drainage system through the open joint gaps of the floor tiling. Adjustable plastic flooring pedestals offer a system that can be intervened under potential insulation problems. They are also quite durable with a carrying capacity of 1000 kg.

Adjustable Pedestal

HEAD

The Head part is attached to the connecting pieces or the base part. By placing joint sticks and skeleton assembly apparatus to the side and central gaps of this head part, tile or lath flooring can be performed.

T-L

The tightening lock is usually used in higher elevations, and it prevents disruptions that can happen over long periods of time due to vibration.

T-SC

The base part can be placed on the slope corrector, eliminating the effects of the slopes created for drainage. Slope correctors are designed to tolerate angles of any kind and produced as 1% and 2% alternatives. One over the other can be successively used.

T-C

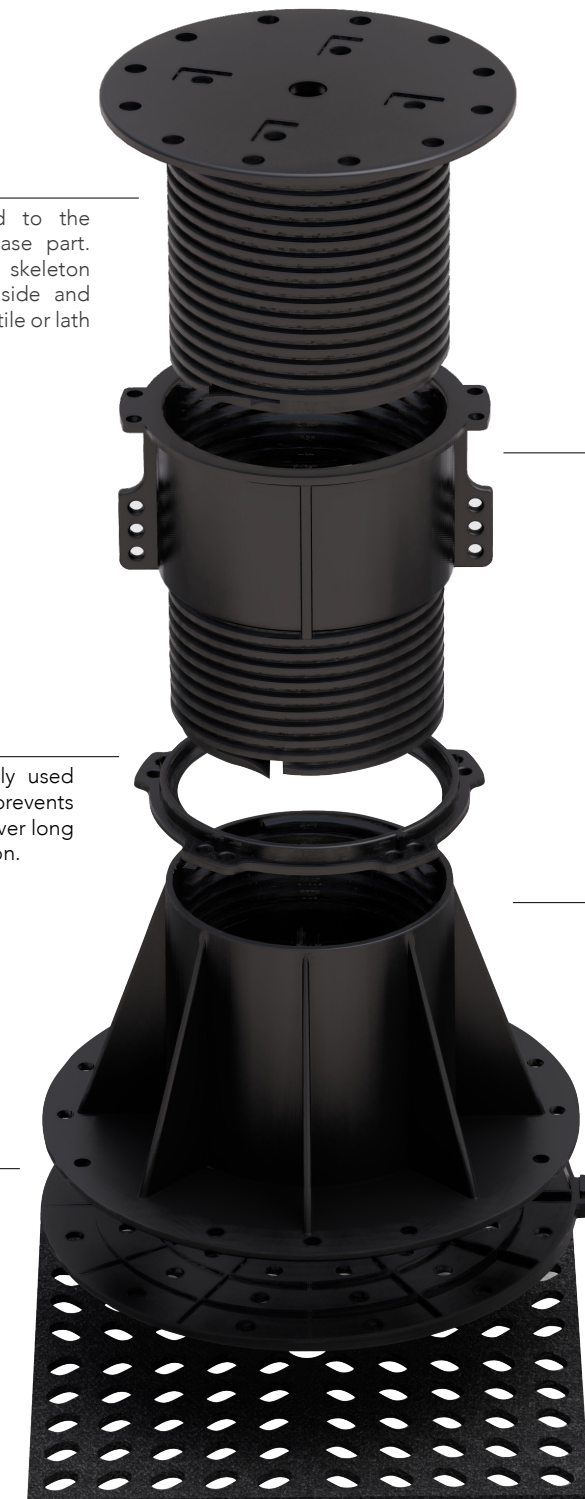
After 181 mm, products are heightened by connecting pieces. More than one piece per module can be used. Electricity wiring and waterwork can be tied to the side and upper parts of these products. This allows for easy access and technical efficacy by holding the installations higher than the ground.

BASE

Its wide radius eliminates the need for anchoring the base part to the ground. It has necessary gaps if anchoring is desired. The sides of the base part have clipping lines as a solution to any range problems that can be met in the edges and the corners of the ground. The lower sides of the base part are produced chamfered, which allows them not to damage the insulation.

T-P

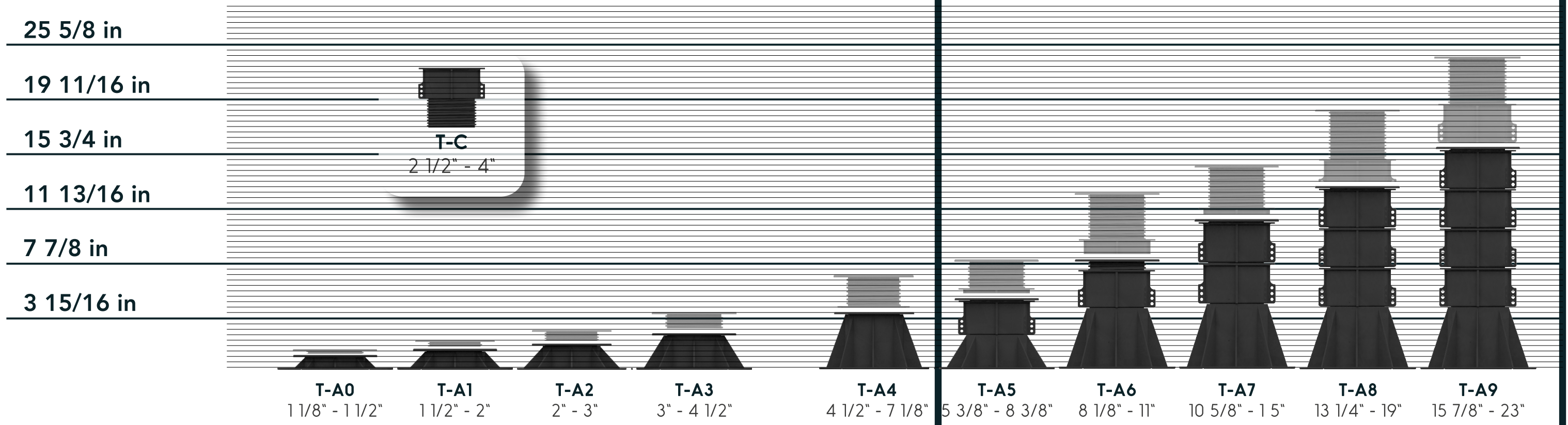
Orthopedic base pad made of TPE raw material can be used in floors with faulty polish, and it absorbs impact vibrations that can occur in the system.





Adjustment Ranges

“Up to 7 inches height, there is no need for coupler usage.”



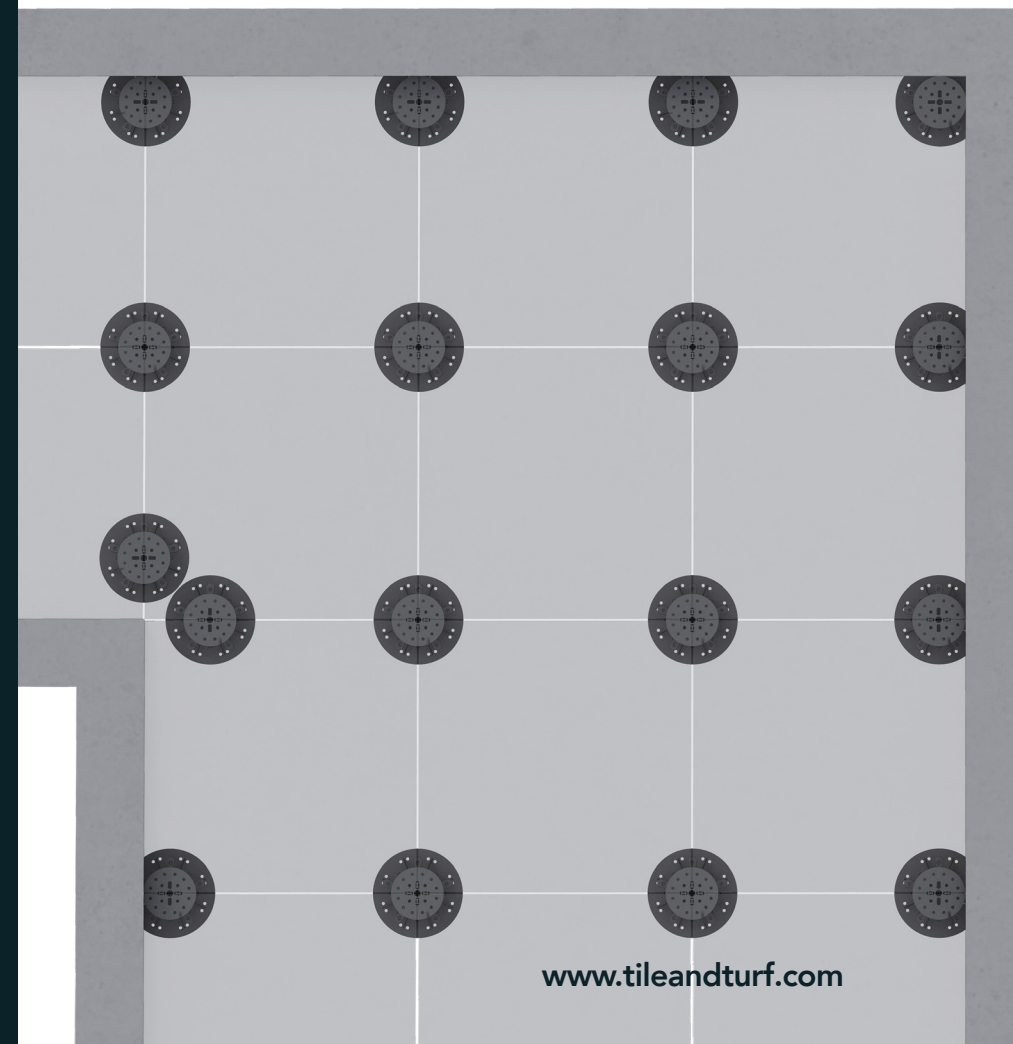
This button ensures that the head part or the Coupler screw-side protrusion, which are placed to the gaps in the base part or Coupler wall, do not surpass the safe elevation level in the application process while adjusting. In this way, the application process is up to the standards and the users' safety is guaranteed.

Safe Level Button



Calculations

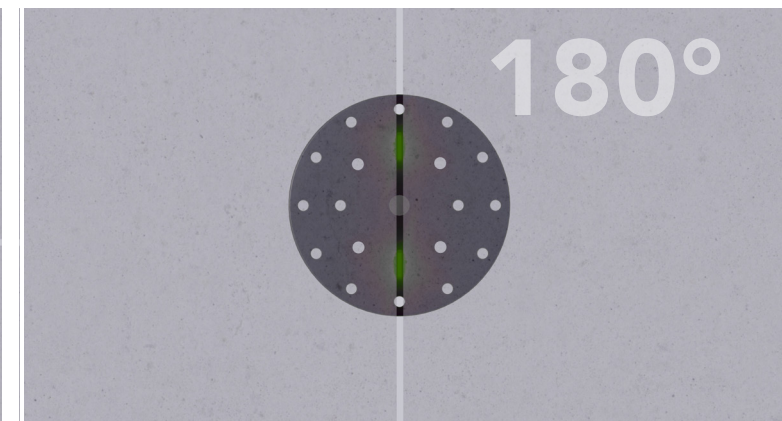
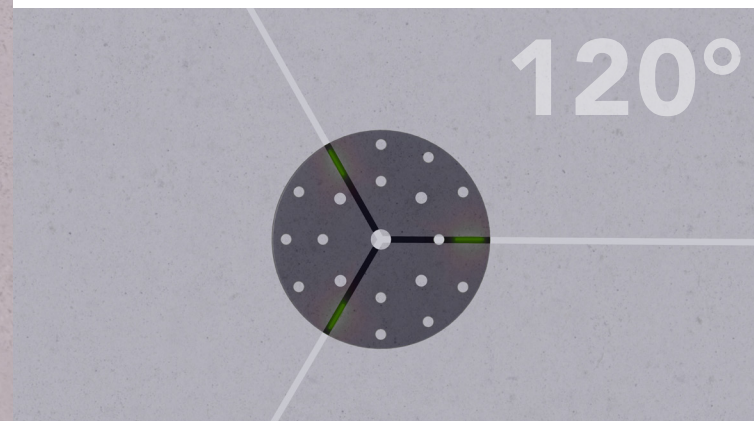
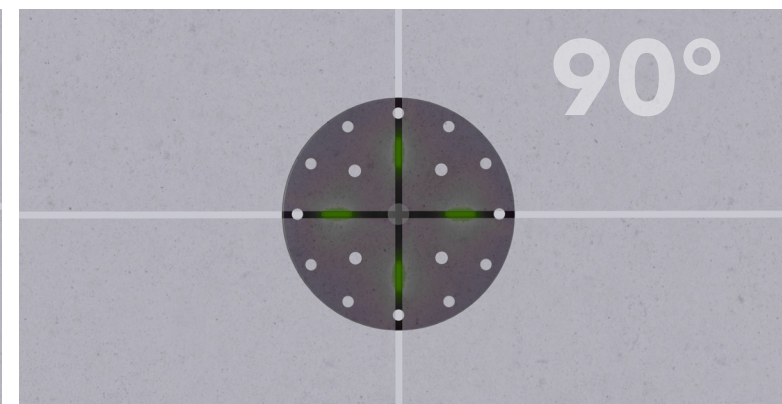
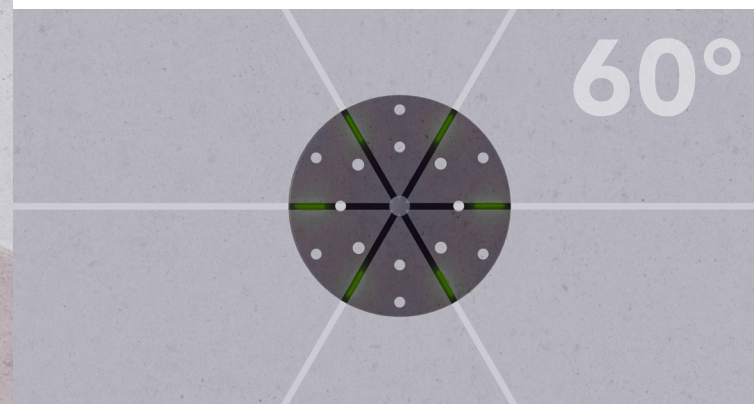
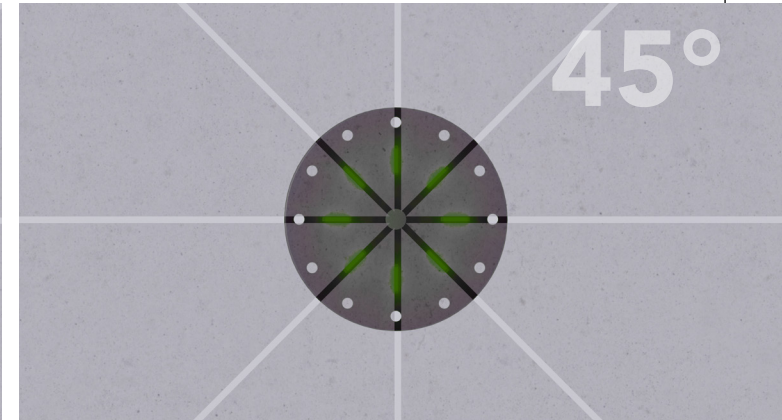
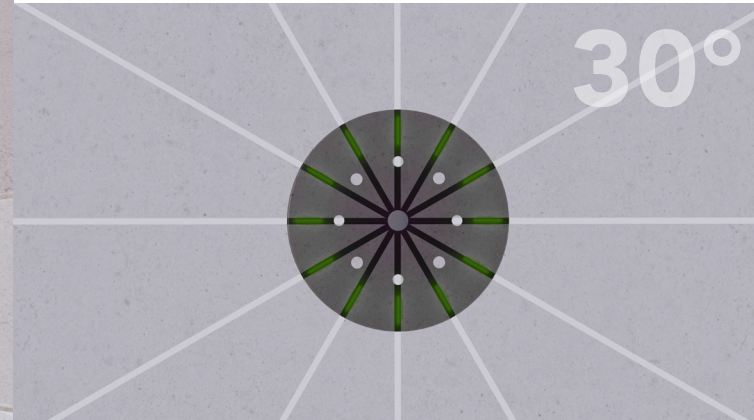
Paving Size	inch/Pcs
11 13/16" x 11 13/16"	13,8
15 3/4" x 15 3/4"	7,80
11 13/16" x 23 5/8"	6,70
15 3/4" x 23 5/8"	5,20
19 11/16" x 19 11/16"	5,00
23 5/8" x 23 5/8"	3,50



Edges and corners may lead to extra consumptions. Adjustable Pedestal Premium works with a jack system and can be used as a single part in edges and corners. So, in proportion to space width, consumption is decreased.

In this process, fundamentally, an adjustment gasket and joint stick with ten different types are required. Angular placement is possible, depending on the floor plan.

Angular Flooring



Tileandturf tile flooring



Tile Flooring

T-ST ●●●
The joint stick and its 2, 4, 6 and 8 mm of width alternatives can be rotated 360 degrees around their axis. The length of these products is 16 mm and has an alternative type with a length of 38 mm and a width of 4 mm.



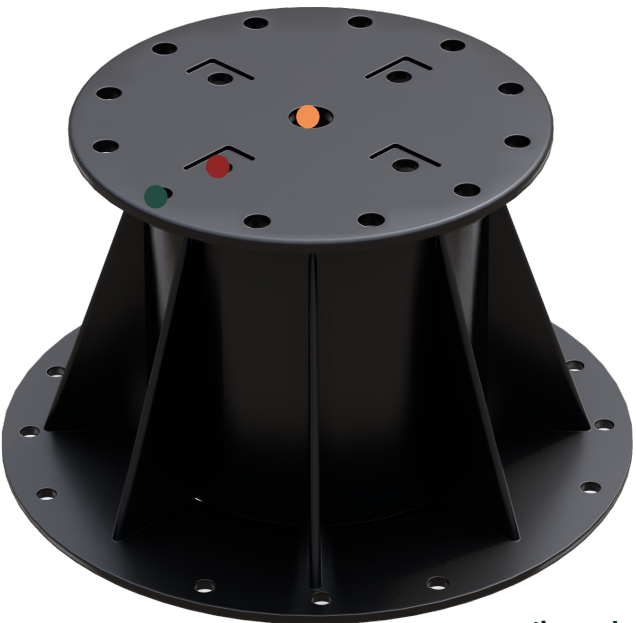
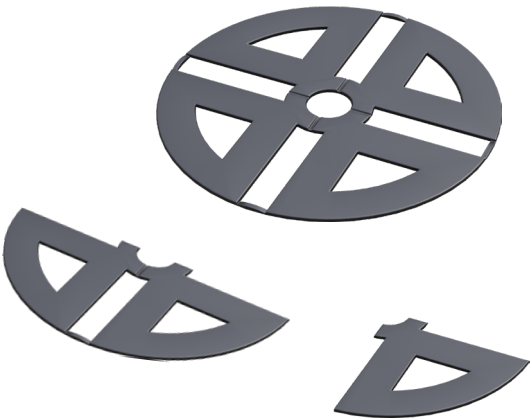
T-SF ●
This product can be fixated by placing it into square-shaped holes. It is recommended that this product is used in floorings with no set-square problems.



T-WS ●
T-WS prevents light tile vibrations and enables the system to work as a whole. It is attached to the pedestal via screws. It allows the tiles to be removed by the Allen key. Tiles can be re-assembled in the same way.

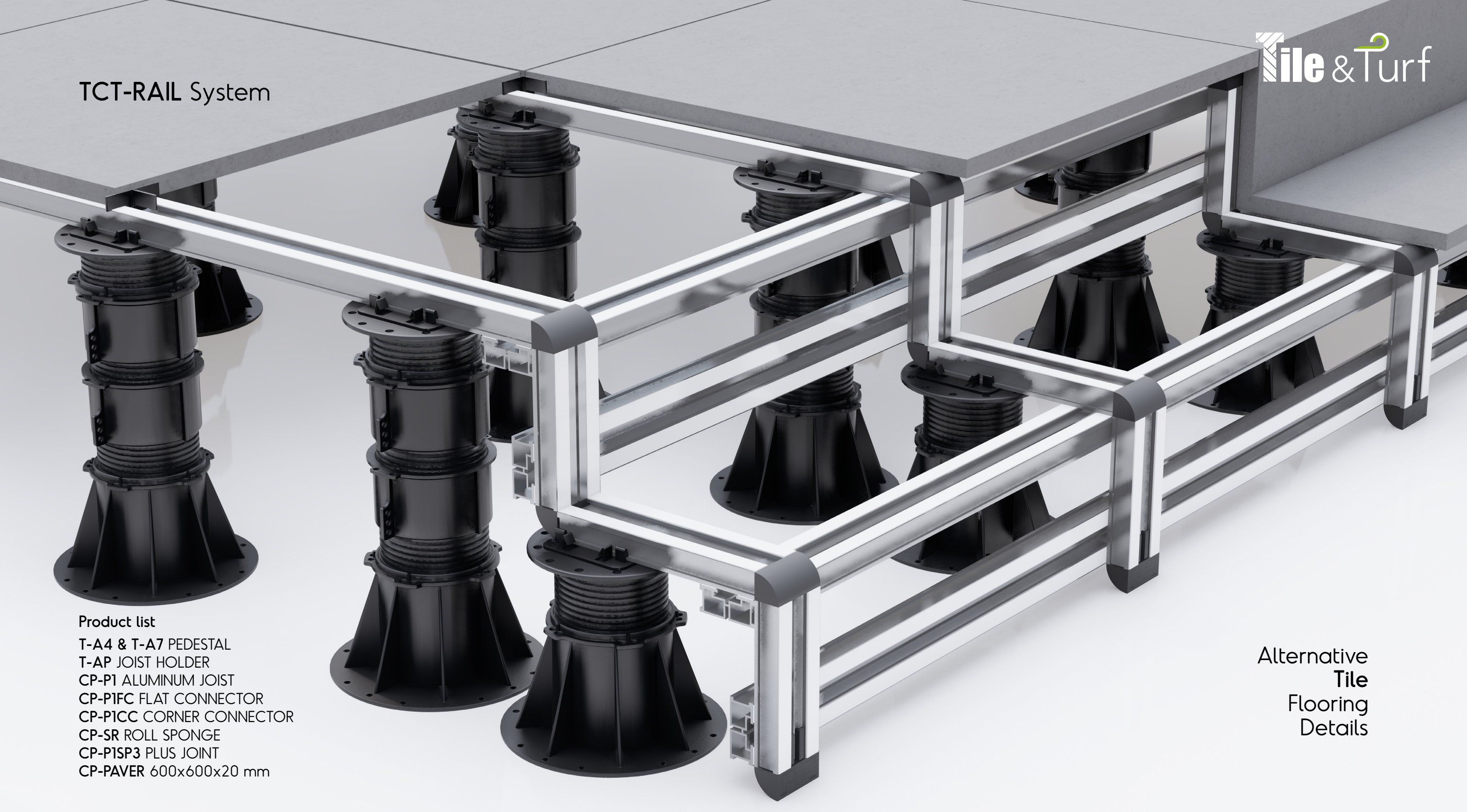


T-AF ●
This product is used in tile floorings. It is usually preferred for specific details where pedestal connection via screws is desired.



T-S
This product is designed with 1& 2mm alternatives and made of TPE raw material. It aims to eliminate the calibration problems usually encountered in tile flooring products. It is used between the tile and the pedestal and absorbs the impact vibration. It is recommended that this product is used in each pedestal module. T-S can be broken into four pieces.

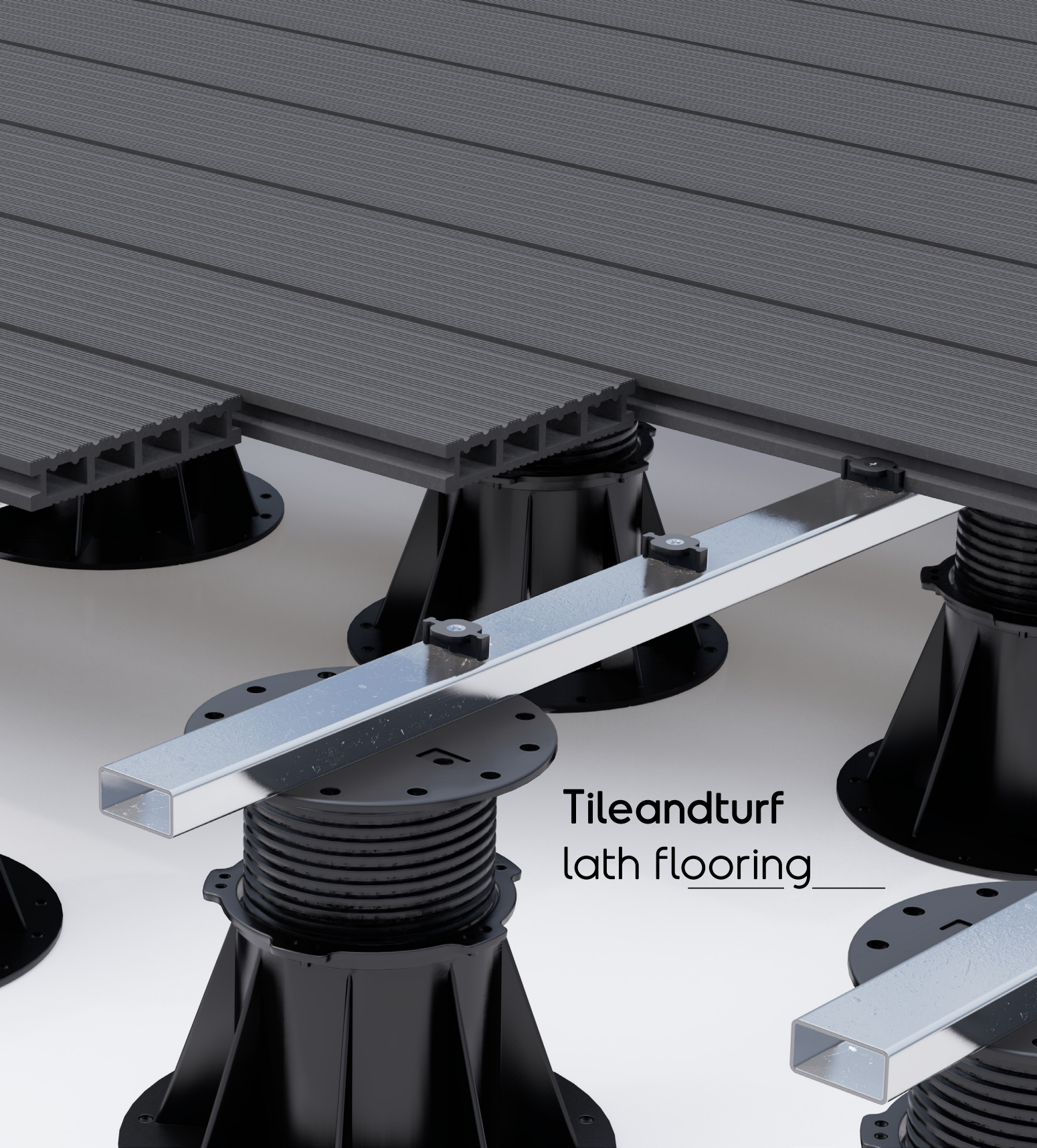
TCT-RAIL System



Product list

T-A4 & T-A7 PEDESTAL
 T-AP JOIST HOLDER
 CP-P1 ALUMINUM JOIST
 CP-P1FC FLAT CONNECTOR
 CP-P1CC CORNER CONNECTOR
 CP-SR ROLL SPONGE
 CP-P1SP3 PLUS JOINT
 CP-PAVER 600x600x20 mm

Alternative
 Tile
 Flooring
 Details



Tile and turf lath flooring

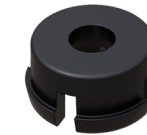
Lath Flooring



T-AP ●
T-AP is used to connect the pedestal and CP-P1 and equivalent skeletons, which are used to support tile and lath floorings. Skeletons are attached to the piece by clicking.

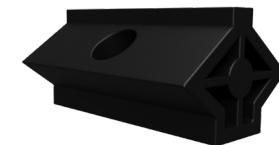


T-AR ● ● ●
This skeleton assembly apparatus can be assembled into any gap of the head part except for the central one, and it can be rotated 360 degrees around its axis. Screwing is possible due to holes on the sides of the product. With this product, all skeletons from 1 cm to 10 cm can be used.

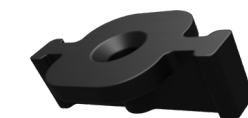


T-AW ●
The circle-shaped skeleton assembly apparatus is first assembled to the skeleton via a screwdriver with distances written in the specifications. Later, it is placed in the central gap of the head part together with the skeleton. Skeletons of any size including and bigger than 1 cm can be used with this product.

for Deck flooring



T-DCN
It is designed to attach the natural deck to the skeleton. It has a conical shape which minimizes the weakening and breaking of deck flooring channels and prevents the connecting screws from being visible from the joint places.



T-DC
It is designed to attach the composite and natural deck floorings to the skeleton.

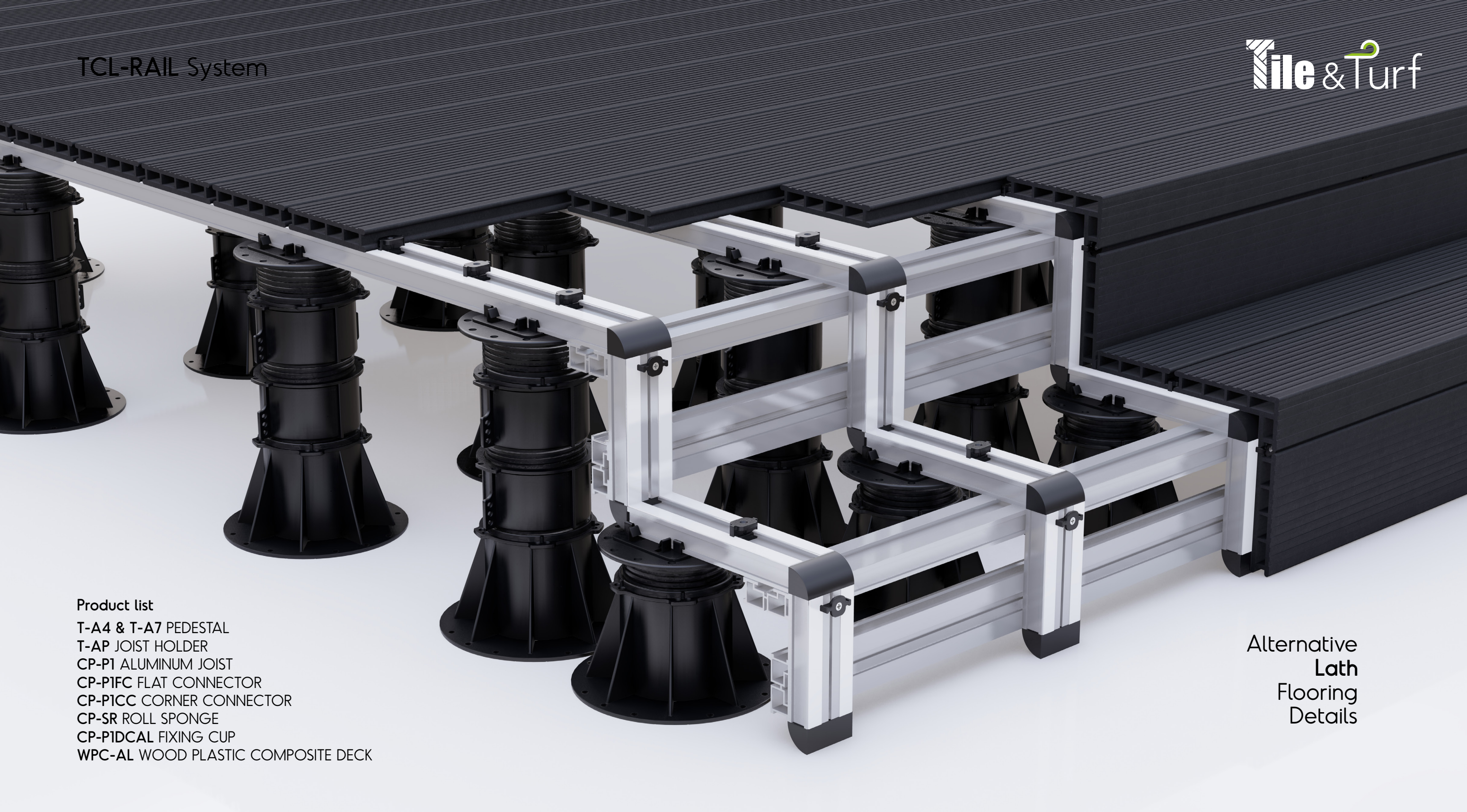
TCL-RAIL System

Tile & Turf

Product list

T-A4 & T-A7 PEDESTAL
T-AP JOIST HOLDER
CP-P1 ALUMINUM JOIST
CP-P1FC FLAT CONNECTOR
CP-P1CC CORNER CONNECTOR
CP-SR ROLL SPONGE
CP-PIDCAL FIXING CUP
WPC-AL WOOD PLASTIC COMPOSITE DECK

Alternative
Lath
Flooring
Details



Orthopedic Base Pad

T-P

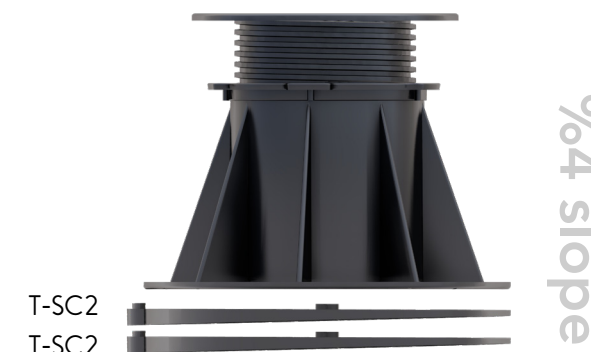
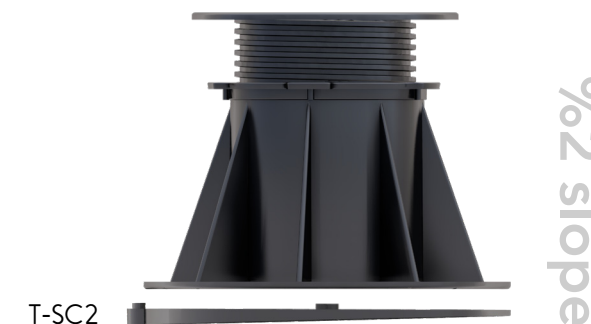
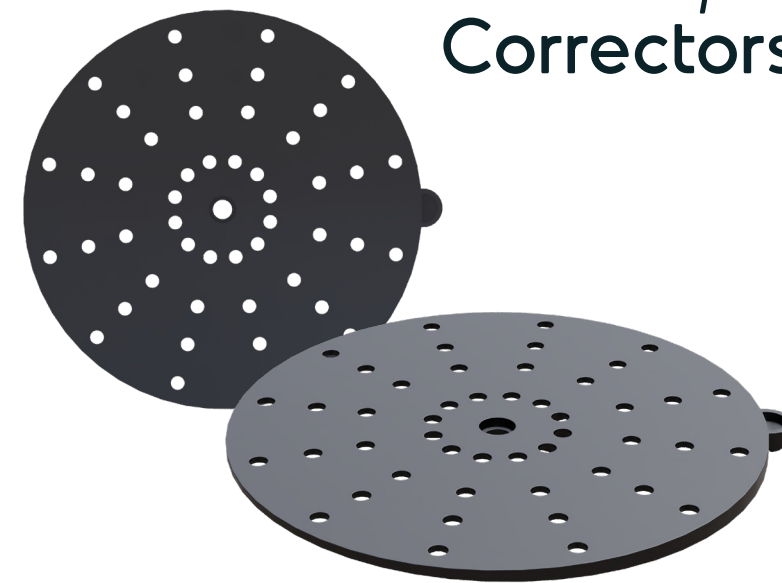
Orthopedic Base Pad made of rubber raw material can be used in floors with faulty polish, and it absorbs impact vibrations that can occur in the system in the long run. It has a width of 5 mm.



Slope Correctors

T-SC

The base part can be placed on the slope corrector, eliminating the effects of the slopes created for drainage. The apparatus is designed to be fixated on the base part and with 1% and 2% alternatives.



Lock



T-L

The tightening lock is usually used in higher elevations, and it prevents disruptions that can happen over long periods of time due to vibration.

It provides a fast and easy application without requiring galvanizing or stainless steel.

They are designed to reach the desired final elevation and eliminate the difference in slope.



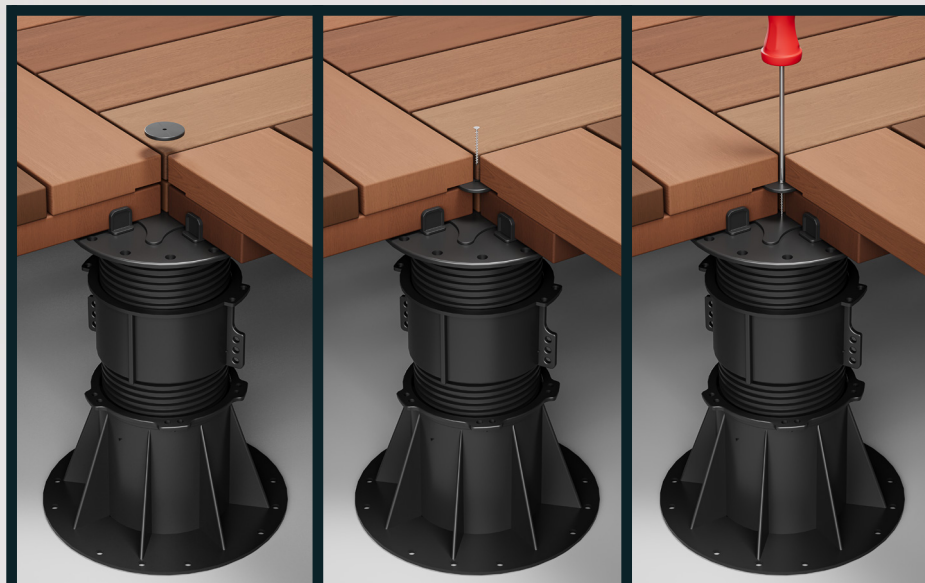
Product list

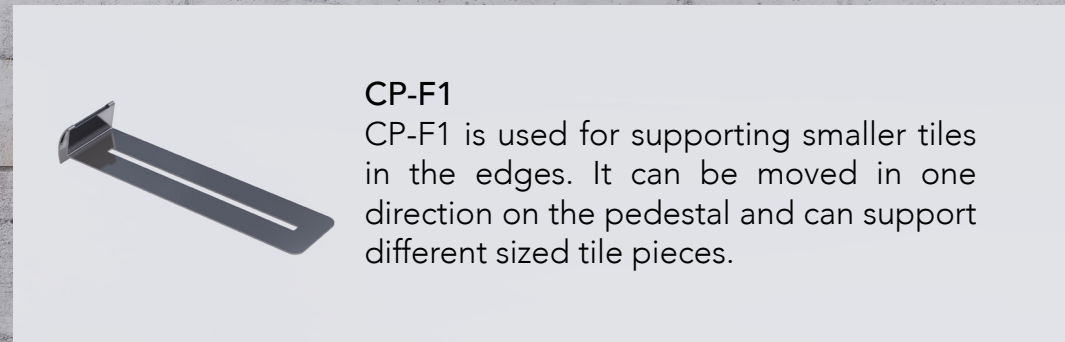
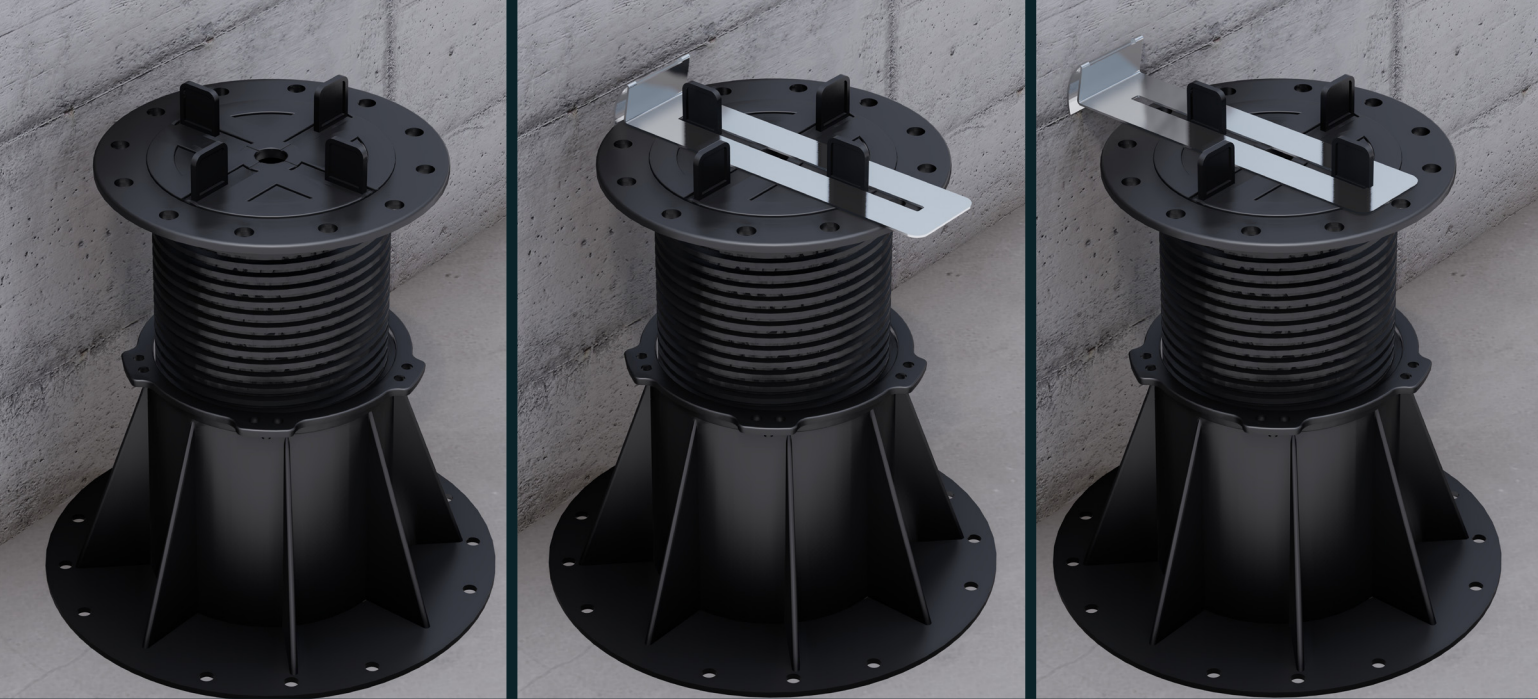
T-A5 PEDESTAL
T-P JOIST HOLDER
CP-P1 ALUMINUM JOIST
CP-P1FC FLAT CONNECTOR
CP-P1CC CORNER CONNECTOR
CP-SR ROLL SPONGE
CP-P1SP3 PLUS JOINT
CP-PAVER 600x600x20 mm



Product list
CP-NATURADECK TILE
T-WS TILE STABILIZER
T-AF FILLING HEAD
T-A6 PEDESTAL

for tile deck stability__





Product list
CP-PAVER 600x600x20 mm
CP-F1 EDGE FINISHER
T-A4 PEDESTAL





Product list
CP-PAVER 600x600x20 mm
CP-F2C STAIR HOLDER
CP-F3C STAIR HOLDER
T-A6 PEDESTAL

5

